



ORBITA Smart Lock

# P7027 User Manual

v24-01

[www.orbitausa.com](http://www.orbitausa.com)



## Table of Contents

### 1: Product Introduction

- 1.1 Appearance ----- P2
- 1.2 Features ----- P3
- 1.3 Technical Specifications ----- P4
- 1.4 Precautions for Use ----- P5
- 1.5 Daily Use and Maintenance ----- P5

### 2: Production Installation

- 2.1 Packing Slip ----- P5
- 2.2 Installation Instructions ----- P7

### 3: Operation Guide

- 3.1 Enter/Exit Management Menu ----- P6
- 3.2 An Overview of the Admin menu ----- P7
- 3.3 Initialization Operation ----- P13

### 4: Networking Guide ----- P13

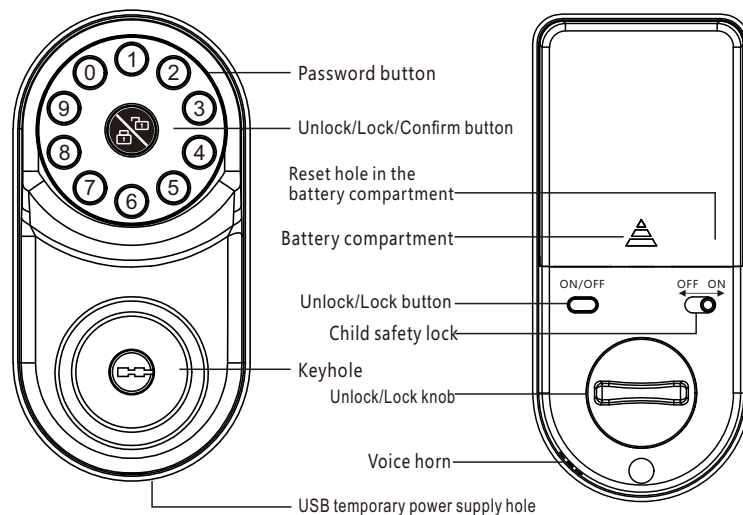
## 1. Product Introduction

Thank you for purchasing our products. Orbita P7027 smart lock is made of high-quality aluminum alloy and stainless steel, simple and fashionable.

There are 3 door opening methods, including password, APP (Bluetooth connection), and mechanical key, and multiple security alarm functions, such as low battery alarm, anti-pry alarm, and forced opening alarm.


It can be used in homes, intelligent residential districts, offices and other scenes, applicable to wooden doors, security doors, and metal doors.

### 1.1 Appearance



#### Child safety lock description:

When the safety child lock is enabled , the password key on the front panel will be disabled, as well as the open/close lock button  on the rear panel.

They only work again when the child lock is disabled .

The status of the child has no effect on the unlocking by the mobile APP, mechanical key and the rear panel knob.

## 1.2 Features

### 1. Unlocking methods

Password, App (Bluetooth), mechanical key

### 2. Password function

Set a password of 6 to 10 digits, with fuzzy input supported, that is, inputting an arbitrary number of digits before and after the correct password can also unlock the door (Correct password + virtual password  $\leq$  16 digits).

### 3. Alarm functions

**Password error alarm:** entering the wrong password 5 consecutive times will trigger the alarm and lock the panel for 120s.

**Anti-pry alarm:** An alarm will be triggered for 2 minutes when the door is violently pried.

**Low battery alarm:** If the battery is low, an alarm will be triggered when the voltage falls below 4.8V, when the door can still be opened about 50 times. Please replace batteries in time.

### 4. Voice navigation both in Chinese and English

### 5. Automatic locking time setting

Time choice: 10s, 30s, 60s, 120s, and 240s (More choices are available in the APP). The automatic locking can be disabled.

### 6. Unlocking with Bluetooth

Download "Smart Life" to unlock the door (through Bluetooth), and view the activity log, battery capacity and alarm information. User passwords can be entered into the APP. (Using APP requires enabling the phone's location and Bluetooth permission, and connecting to the door lock).

### 7. TYPE-C temporary power supply

Support DC 5V, 1 A charger and above to provide temporary power supply for unlocking.

### 8. (Lock + APP settings) 5 administrators and 45 users can be entered

## 1.3 Technical Specifications

Material	high-quality aluminum alloy		
Operating voltage	DC 6V (i.e. 4 dry cells)		
Child safety lock	equipped on the rear panel		
Quiescent current	< 50 uA		
Operating current	< 200 mA		
Battery life	6-8 months for a new battery		
Low voltage alarm	< 4.8V		
Password capacity	5 admins + 45 users		
Door swing direction	left or right		
Setting method	voice guidance		
Suitable door thickness	35-55 mm		
Language	Chinese/English		
Hidden PIN code	a 16-digit hidden PIN code that prevents peeping		
Working environment	-25°C ~70°C	Working humidity	< 93%
Log information	storage and alarm information can be viewed on the phone		
Unlocking ways	password, key, mobile APP (Bluetooth)		
Applicable door types	wooden doors, security doors, copper doors, etc.		
STANDARD	GB/T374-2001, ISO9001-2015		

## 1.4 Precautions for Use

1. Do not place a battery in the lock under installation.
2. Keep the door open during installation to prevent accidents caused by improper operations.
3. Manage the password carefully, and change it regularly in case of disclosure.
4. Replace the battery as soon as possible when the battery alarm goes off.
5. Make sure the door is completely locked when you go out.
6. Unlock with a mechanical key when the password does not work normally, and keep the mechanical key properly.
7. Use a power bank to temporarily charge the lock when the battery power is too low to unlock the door.

## 1.5 Daily Use and Maintenance

1. Do not expose panels to corrosive substances to prevent damage to the surface coating.
2. Do not operate with wet hands to prevent water, beverages, and other liquids from damaging the electronic components inside the lock.
3. Do not press the number keys on the lock too hard or with sharp objects.
4. Use a soft cloth to clean the lock, and do not use water, benzene or alcohol to wipe the lock.
5. Do not push or pull the product too hard.

## 2: Product installation

### 2.1 Packing Slip

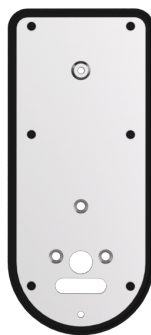
(Please check the packing slip carefully after unpacking and contact the after-sales service for any missing items.)



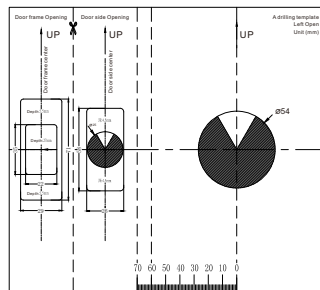
Front panel component



Rear panel component



Rear panel base



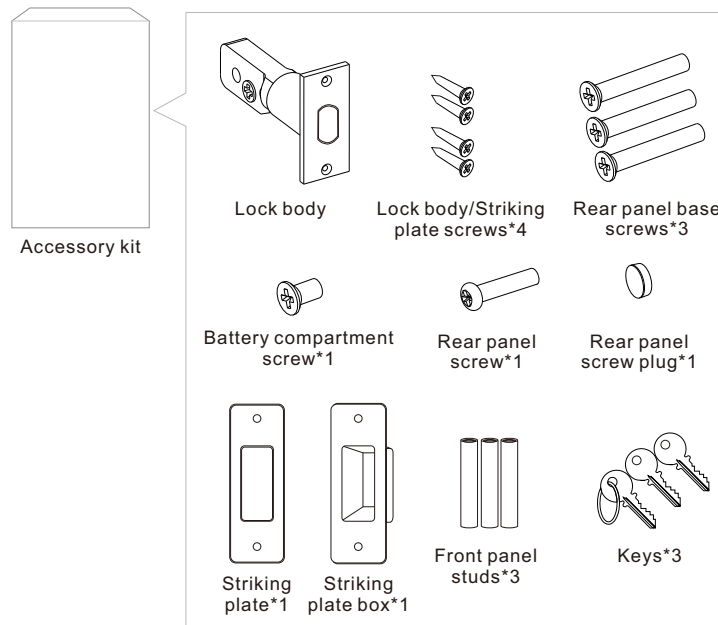
A drilling template



Warranty/Product certification

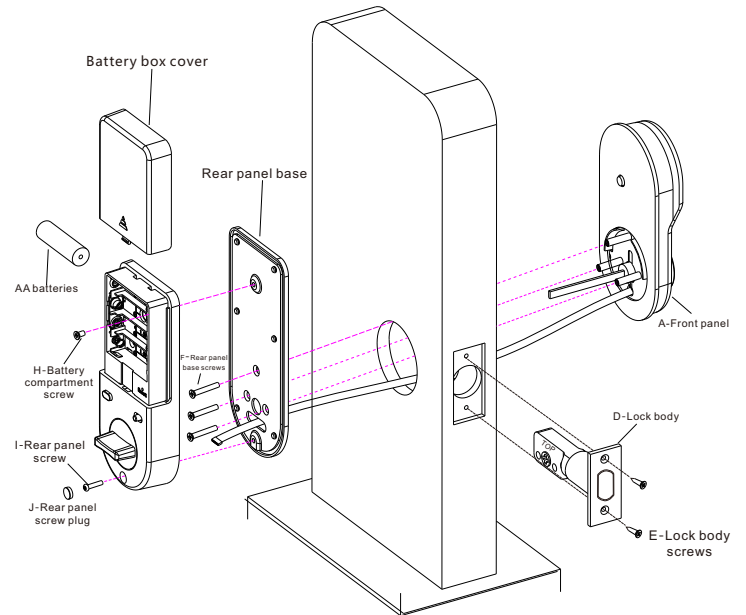
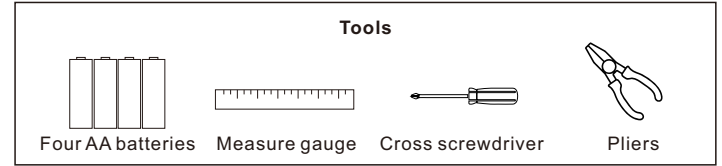
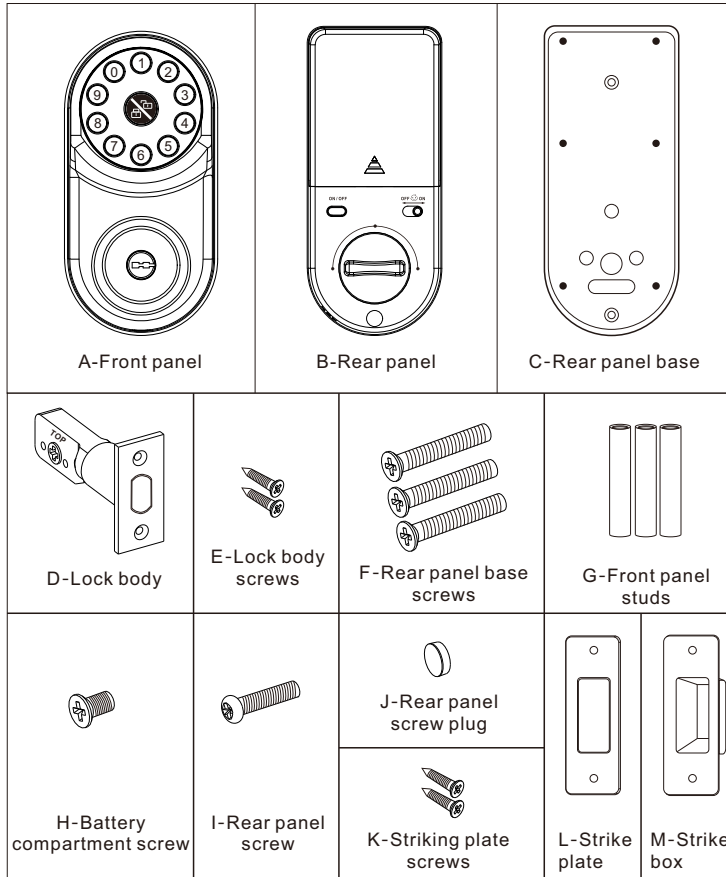


User Manual

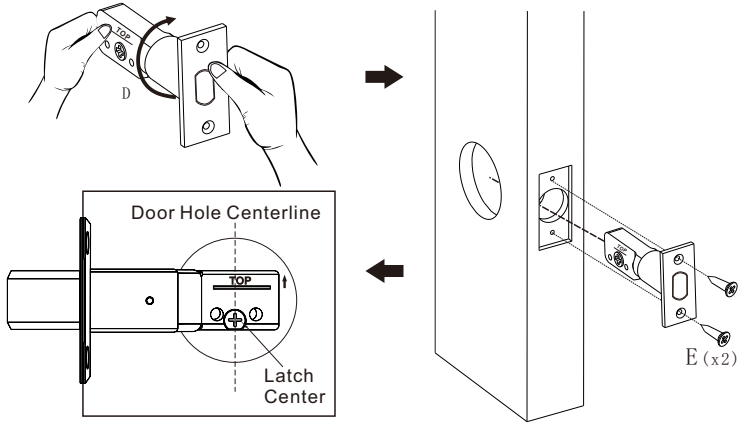




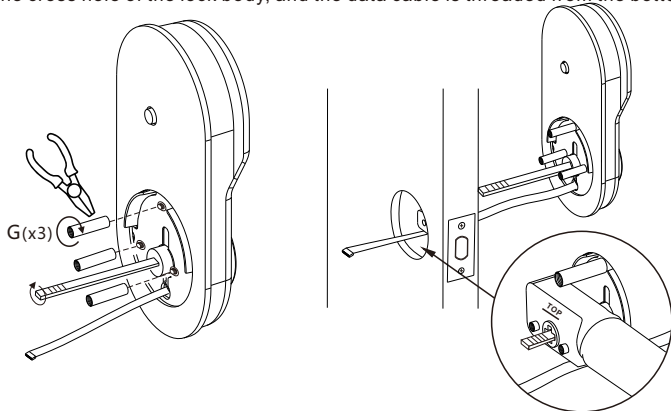
## Accessory List:



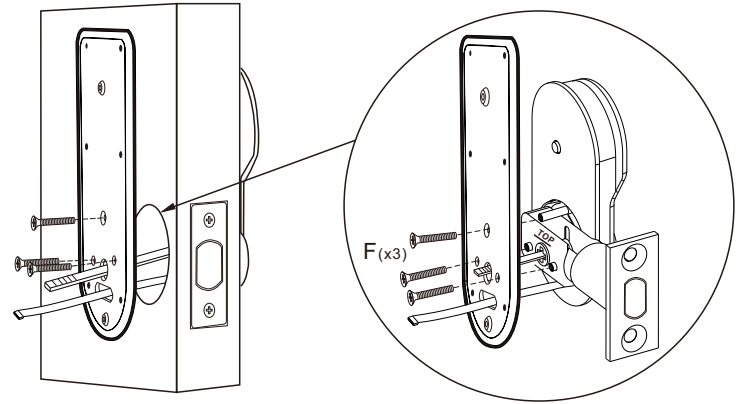
Step 2: Rotate the lock body to adjust its length based on the axle spread of the door hole, and align the center of the latch center with the center of the door hole. Keep the letters "TOP" on the lock body up and the socket down, and lock it with the lock body screws (E).



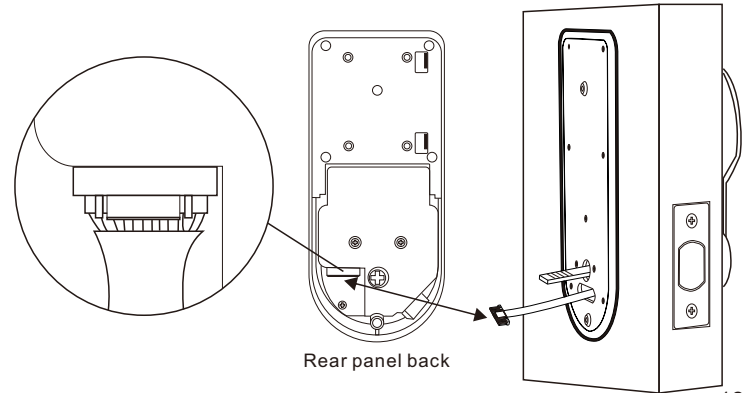
Step 3: Equip 3 front panel studs (G) on the front panel, install the front panel, and rotate the flat square shaft to the horizontal direction through the horizontal hole of the cross hole of the lock body, and the data cable is threaded from the bottom.



Step 4: Align the holes to install the rear panel base (C), and lock it in place with 3 rear panel base screws (F).

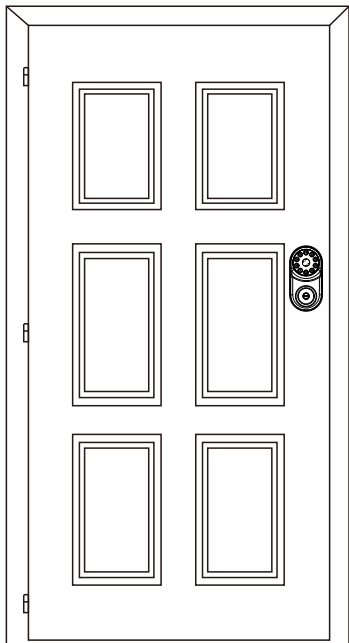


Step 5: Connect the data cable between the front panel and the back of the rear panel.

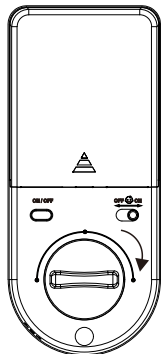


Step 6: Adjust the rear panel knob to install the rear panel according to the door swing direction.

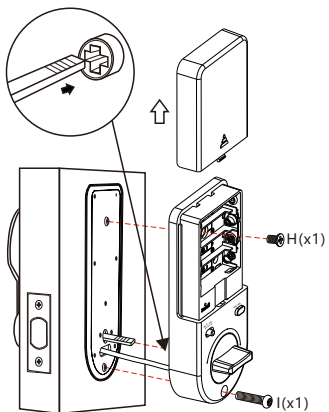
**Left swing:**



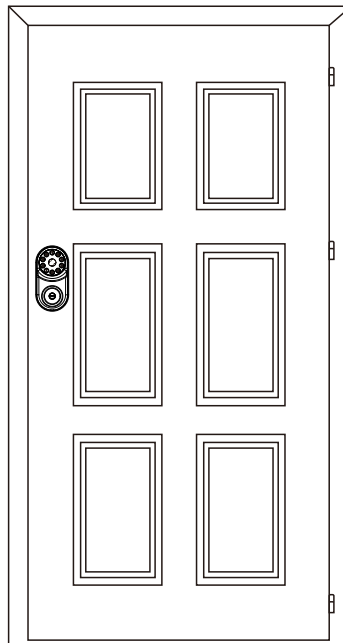
1. Rotate the knob to the horizontal direction.



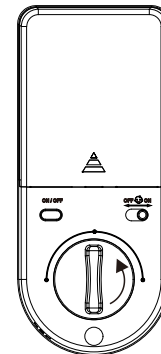
2. Install the rear panel by aligning the square shaft of the front panel with the horizontal hole of the knob and lock it with the corresponding screws.



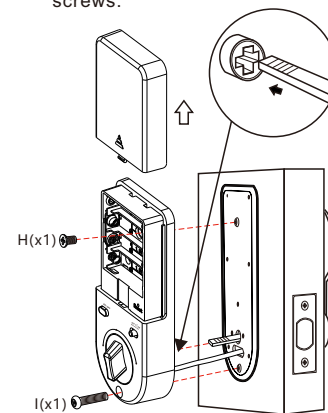
**Right swing:**



1. Rotate the knob to the vertical direction.

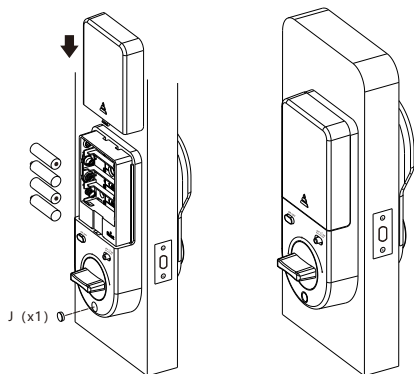


2. Install the rear panel by aligning the square shaft of the front panel with the horizontal hole of the knob and lock it with the corresponding screws.





Step 7: Load 4 AA alkaline dry batteries, put on the battery cover, and plug the rear panel screw holes with rear panel screw plugs (J).



Step 8: Debugging. After installation, insert the batteries and you'll hear a voice prompt "The door has been locked. Please press the 'OK' button to confirm the door swing direction".

(1): If the latch is currently extended, the door swing direction is correct and there is no need to press the "OK" button to change the direction. Simply wait for the blue light to go off normally, or press and hold the "OK" button to exit the setting for changing the door swing direction.

(2): If the latch is currently retracted, the door swing direction is reversed. In this case, press the "OK" button and you'll hear a voice prompt "Motor has been reversed". Then press and hold the "OK" button to confirm the change and exit the setting menu.

After setting the door swing direction, rotate the knob on the rear panel to check if the lock body works properly.

Open the door with a mechanical key and check if the lock body works properly. Press the "ON/OFF" button on the rear panel, the voice prompt "The door is unlocked" indicates that the latch is retracted, and the voice prompt "The door is locked" indicates that the latch is extended. Once everything is OK, perform the user settings and connect the lock to your phone according to the instructions in the user manual.

If you want to change the door swing direction again, simply remove one battery, press any buttons on the front panel to ensure the residual power is drained, and insert the battery again. The "A" button on the front panel will flash blue and you will hear a voice prompt "Please press the confirm button to switch the door swing direction".

This method does not work if an Admin has already been entered. In this case, you need to reset the lock to its initial state before performing the above operations.



The initial admin password is "123456", which needs to be entered for accessing the Administration Menu for the first time. The initial password will be automatically cleared and no longer valid after the admin password is entered. If you initialize the lock, all the passwords entered will be cleared and the admin password will be restored to "123456".

### 2-3: Switch Door Swing Direction

In the initial state without entering the administrator, the front panel lights up blue after loading batteries and powering on, then press "OK" with a voice prompt "Motor Reversed", and "OK" lights up green, the direction will be switched once the green light is off.

If you want to change the door swing direction again, take out a battery and wait for 20-30s to reload, the blue light will be on again.

Press "OK" to change the door swing direction.



If the administrator has been entered, this method will not work, and lock initialization is required.

# III Operation Guide

## Enter/Exit Administration Menu

Long press "⏻" for 3s, enter admin password according to the voice prompt and press "⏻" to enter the Administration Menu. (Initial admin password: 123456)  
 Long press "⏻" for 3s in any menu can exit.

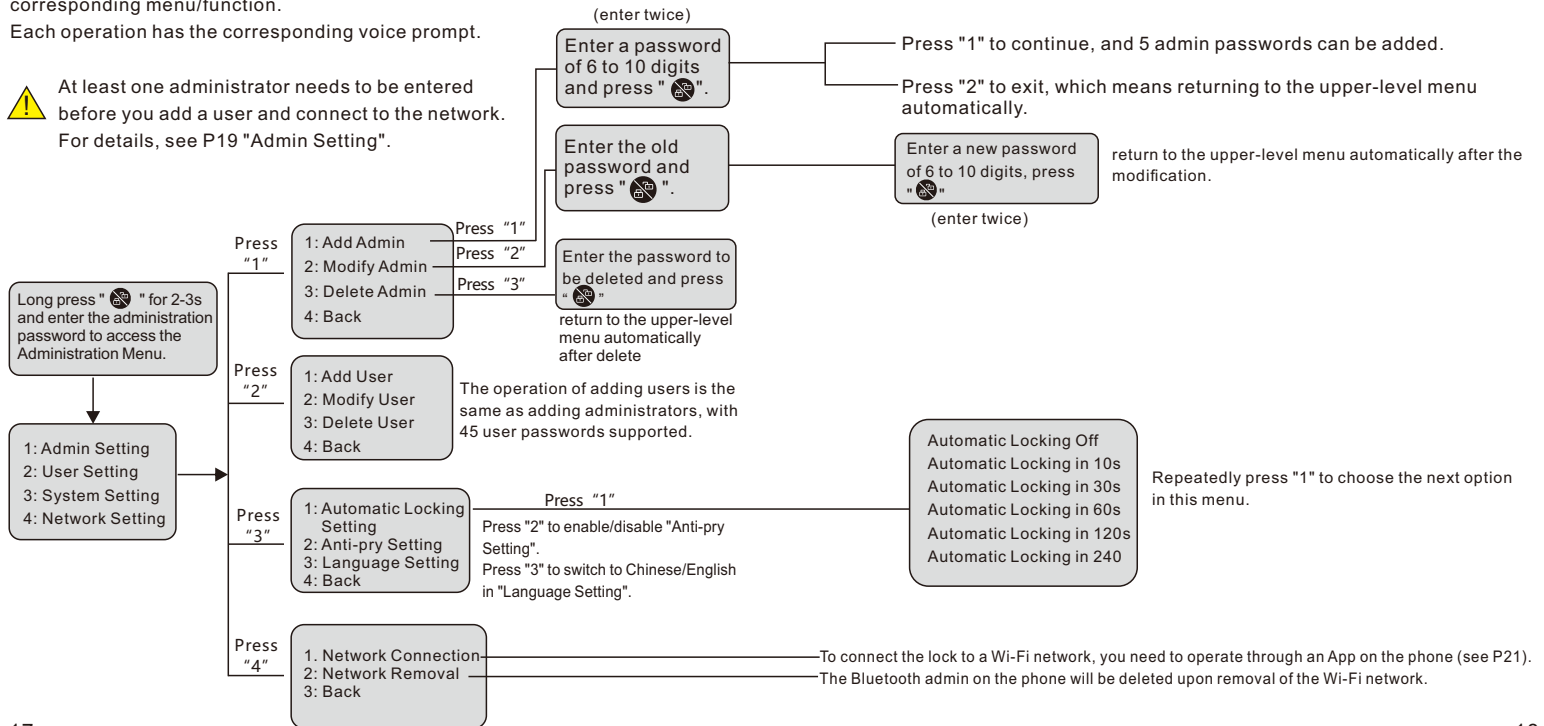
## Administration Menu Overview

Press the corresponding number before the menu option to access the corresponding menu/function.

Each operation has the corresponding voice prompt.



At least one administrator needs to be entered before you add a user and connect to the network. For details, see P19 "Admin Setting".



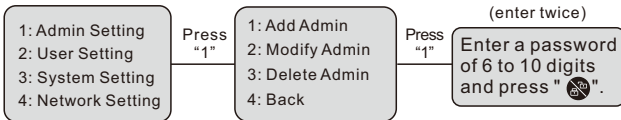
### 3-1 Admin Setting:

#### Add Admin: (5 administrators can be added)

Long press "☎" for 3s to enter the initial password "123456" and press "☎" to access the Administration Menu.

Press "1" according to the voice prompt to access the "Admin Setting" menu, and press "1" again to enter "Add Admin".

Enter a password of 6-10 digits according to the voice prompt, and press "☎". You need to enter the password twice. After that, according to the voice prompt, press "1" to continue or press "2" to quit adding and return to the upper-level menu. The initial password will be invalid once the administrator is added, and the new admin password is required to enter the Administration Menu next time.



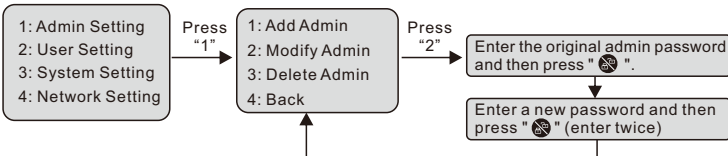
After adding you can Press "1" to continue or Press "2" to exit, which means returning to the upper-level menu automatically.

#### Modify Admin:

Long press "☎" for 3s to enter admin password and press "☎" to access the Administration Menu.

Press "1" according to the voice prompt to access the "Admin Setting" menu, and press "2" to enter "Modify Admin".

Enter the admin password that needs to be modified (e.g., 33124) and press "☎". According to the voice prompt, enter a new password and press "☎" (enter twice), and return to the upper-level menu automatically after the modification.



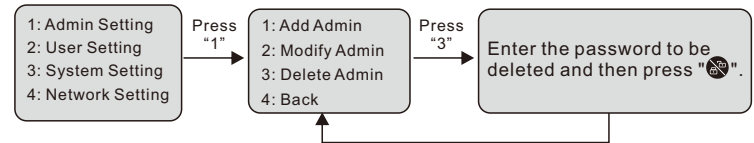
#### Delete Admin:

(The only administrator cannot be deleted directly, but can be done by restoring the initial settings.)

Long press "☎" for 3s to enter admin password and press "☎" to access the Administration Menu.

Press "1" according to the voice prompt to access the "Admin Setting" menu, and press "3" to enter "Delete Admin".

Input the password to be deleted (e.g., 988125), press "☎" and return to the upper-level menu automatically after the deletion.



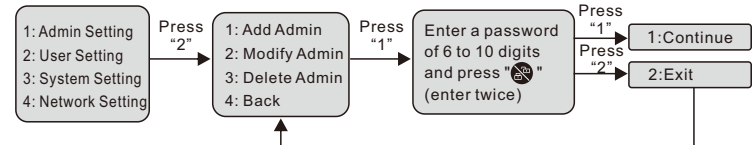
### 3-2 User Setting:

#### Add User: (Only 45 users can be added)



Long press "☎" for 3s to enter admin password and press "☎" to access the Administration Menu.

Press "2" according to the voice prompt to access the "User Setting" menu, and press "1" to enter "Add User".


According to the voice prompt, enter a password of 6 to 10 digits, and press "☎". You need to enter the password twice. After that, according to the voice prompt, press "1" to continue or press "2" to quit and return to the upper-level menu.




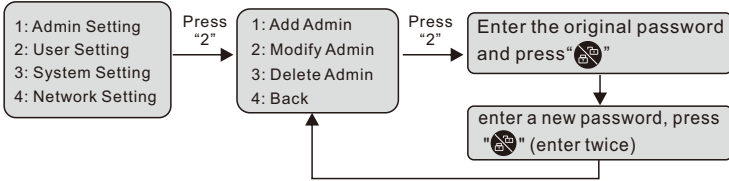
## Modify User :

Long press " " for 3s to enter admin password and press " " to access the Administration Menu.



Press "2" according to the voice prompt to access the "User Setting" menu, and press "2" to enter "Modify User".

Enter the original password (e.g., 12462) and press " ".


According to the voice prompt, enter a new password, press " " (enter twice), and return to the upper-level menu automatically after the modification.

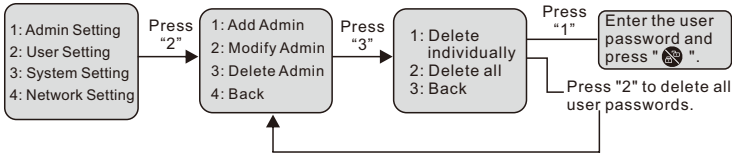


## Delete User :

Long press " " for 3s to enter admin password and press " " to access the Administration Menu.



Press "2" according to the voice prompt to access the "User Setting" menu, and press "3" to enter "Delete User".

Press "1" to delete individually. Enter the password to be deleted (e.g., 0892341) and press " ". Press "2" to delete all user passwords, and return to the upper-level menu automatically after the deletion.



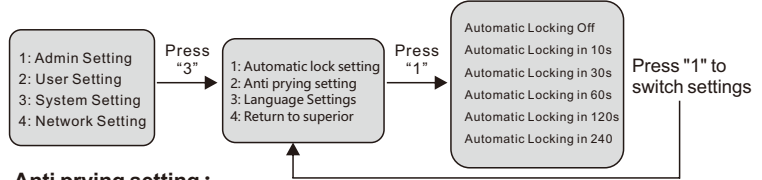
## 3-3 System Setting :

### Automatic lock setting :



Long press " " for 3s to enter admin password and press " " to access the Administration Menu.

Press "3" according to the voice prompt to access the "User Setting" menu, and press "1" to enter "Automatic Locking Setting". Repeatedly press "1" to choose the locking time, with a voice prompt reminding the current status, such as "Automatic Locking in 30s".

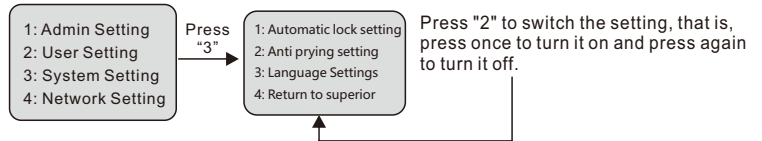
It automatically returns to the upper-level menu when the voice prompt is complete.





### Anti prying setting :

Long press " " for 3s to enter admin password and press " " to access the Administration Menu.

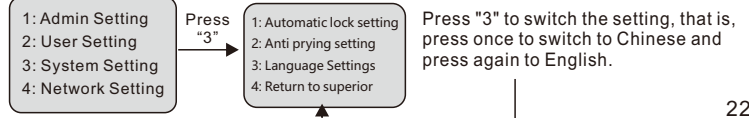
Press "3" to access the "System Setting" menu, and repeatedly press "2" to turn on and off the alarm, with a voice prompt reminding the current status, such as "Anti-pry Alarm Disabled". It stays in the current menu when the voice prompt is complete.



### Language Setting :



Long press " " for 3s to enter admin password and press " " to access the Administration Menu.

Press "3" to access the "System Setting" menu, and repeatedly press "3" to switch to Chinese and English language, with a voice prompt reminding the current status, such as "Chinese Mode". It stays in the current menu when the voice prompt is complete.

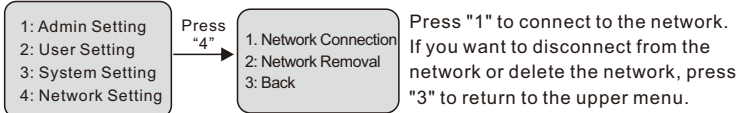


### 3-4 Network Setting:



**Network connection** (requires APP operation, see P23 in detail)

Long press " " for 3s to enter admin password and press " " to access the Administration Menu.

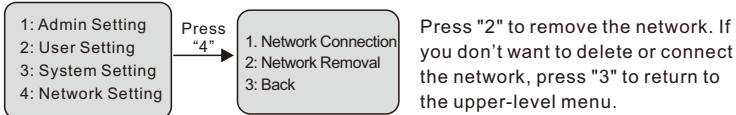
Press "4" according to the voice prompt to access "Network Setting", and press "1" to connect to the network. The keys are disabled when connecting the network, which will be restored once the network connection succeeds or fails.




### Network Removal:

Long press " " for 3s to enter admin password and press " " to access the Administration Menu.

Press "4" according to the voice prompt to access "Network Setting", and press "2" to remove the network. Removing the network will delete the Bluetooth admin only, not affecting the registered lock admins and ordinary members.



### 3-5. Initialization :

Open the battery cover as shown in the picture below, and press the reset hole, which triggers a voice prompt "Please keep long pressing to initialize the device". Press the reset hole for 3-5s triggers a voice prompt "Please confirm device initialization", and press " " on the front panel, there will be a voice prompt of "Initialization Complete".

This operation will delete all the passwords set before, and restore the initial password "123456".

The door lock admin and Bluetooth admin will also be deleted, please operate with caution.

